



# instant.strong.secure.

thinking inside and outside the box

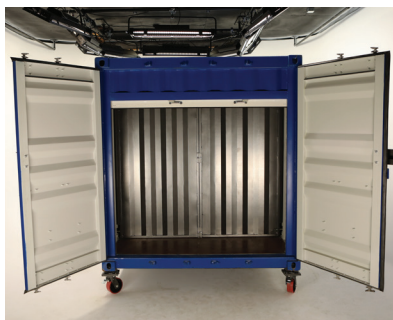
## DIVIDE IT!

Our INSTA Divider Wall allows you to convert one large container into separate storage spaces that are completely secure from each other.

- Install or remove in less than 20 minutes
- Requires no welding or bolting to container
- Corrugated steel for added strength and security
- Very popular with the Self-Storage industry
- Also available in 93" height (#6019 INSTA Divider Wall)

## #6019 INSTA DIVIDER WALL 93" #6020 INSTA DIVIDER WALL 90"

### Installation Guide



#### Tools Required For Installation

- PPE – Eye protection, gloves, foot protection
- 15/16" Ratchet socket or wrench
- 3/4" Ratchet socket or wrench



1

1. Ensure all PPE (Personal Protective Equipment) is worn.
2. Insert spring feet into the corresponding holes provided in the outer frame on each of the #6020 INSTA Divider Walls.
3. While pushing down with force on the spring foot thread the nut and hand tighten so that approximately 1inch (25.4 mm) of thread is sticking out past the nut.
4. Repeat with remaining spring feet.



2

1. Prior to positioning the divider wall panels ensure the bolting tabs on each panel are facing opposite directions.
2. On a slight angle, position one divider wall with the spring feet against the inner wall corrugation.
3. Repeat with the other divider wall by placing in the opposite wall corrugation.

## INSTA DIVIDER WALL

[www.instacm.com](http://www.instacm.com)

1.866.647.4353



INSTA Container Modifications is a proud charter member of the National Portable Storage Association (NPSA).



# instant.strong.secure.

thinking inside and outside the box

## DIVIDE IT!

Our INSTA Divider Wall allows you to convert one large container into separate storage spaces that are completely secure from each other.



3

1. Bring both walls together simultaneously. Continue pressing together in the middle of the two divider walls until they meet in the middle.
2. Insert the hardware provided into the six middle connection points. Three on one side and three on the other. Tighten hardware.



4

1. Complete the installation by ensuring the nuts on the spring feet are tightened the rest of the way.

## INSTA DIVIDER WALL

[www.instacm.com](http://www.instacm.com)

1.866.647.4353



INSTA Container Modifications is a proud charter member of the National Portable Storage Association (NPSA).

**WARNING** - All products that require installation or fabrication should never be done until you have the product in hand to take exact measurements. While every attempt is made to make sure product specifications are accurate, there is the possibility the products have been updated or a small variance between production made the measurement off from what's in this book. Installation of products may require some fabrication experience, and in no way does warranty cover installation mistakes.